

# Ingredient Weighing System

## Complete System for Bulk Breaking

The economic way of conveying and weighing system for powder materials in order to break the bulk either from silo, big bag or small bag into smaller amount before transferring to other processing machines.

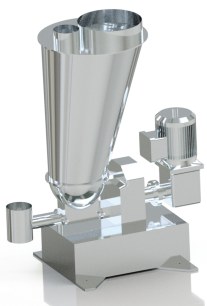
The customer can ensure that the design will be fit with the standards of food production with high quality and efficiency in the manufacturing process.

### Benefits at a glance

- High-quality stainless-steel design, easy to clean and maintain
- Simple, operator-friendly operation
- Dust-free metering due to closed system design
- Ready assembled for immediate installation
- Combination with different size of weighing system, suitable for a wide range of requirement

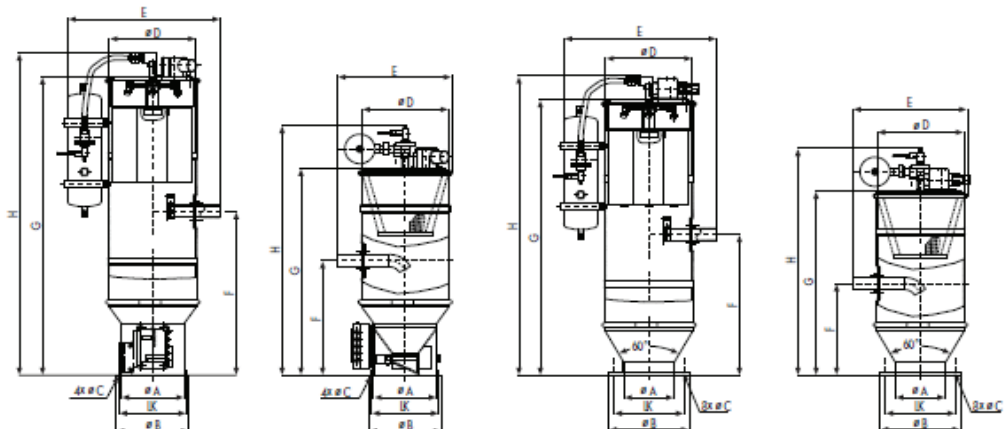


### Weighing System



Description	Model	Screw Center Distance (mm)	Feed Rate (L/Hr)	Hopper Volume (Liter)	Feed Accuracy
Screw Feeder	CMF-T18	18	12-120	20	0.5%, 0.2%
	CMF-T28	28	50-200	40-80	0.5%, 0.2%
	CMF-ZD 32 B	38	50-500	40-100	0.5%, 0.2%
	CMF-T38	46	80-800	40-160	0.5%, 0.2%
	CMF-ED 55B	64	150-2500	40-200	0.5%, 0.2%
	CMF-T78	78	400-4000	40-200	0.5%, 0.2%

### Conveying System



Material	Capacity/Hr	Hopper Loader Type	Vacuum Pump
Stainless Steel	500	FXP 3544-2	4.3 kW, 230/415 VAC
	1000	Receiver AXP 6040-3	Rotary vane vacuum pump VXLF for DN50 5.5/6.4 kW, 250 m <sup>3</sup> /hr
	1500	Receiver AX 3520	Rotary vane vacuum pump VXLF for DN50 5.5/6.4 kW, 250 m <sup>3</sup> /hr
	2000	Receiver AXP 6040-3; SPS; 350 L	Rotary vane vacuum pump VXLF for DN65 11.0/12.6 kW